

MACLEAN HELICAL TIEBACKS & HELICAL SOIL NAILS

ADVANTAGES >

ALL WEATHER INSTALLATION
PERMANENT OR TEMPORARY APPLICATIONS
REDUCED TOTAL INSTALLATION TIME
ECONOMICAL SOLUTION
NO GROUT REQUIRED
GENERATES NO SPOILS

BUILDING STRONG FOUNDATIONS

ABOUT MPS

We are "Connecting People for Good" by manufacturing and supplying products for electric utility, civil/construction and communication markets. Our areas of product expertise include: anchors, piles, automatic splices and bolted connectors, silicone rubber non-ceramic insulators for transmission, distribution and substation applications, surge arresters, pole line hardware, aluminum and ductile clamps, fiberglass brackets and guy strains, steel fabrications, bonding and grounding products, and more!

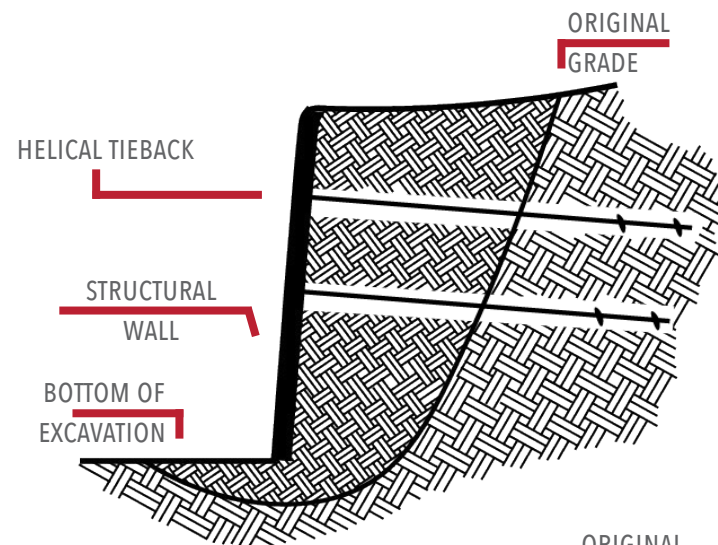


HELICAL TIEBACKS & HELICAL SOIL NAILS

TIEBACKS

MPS Tieback Anchors are designed to work together with structural retaining walls to retain unstable soil mass. Other benefits include:

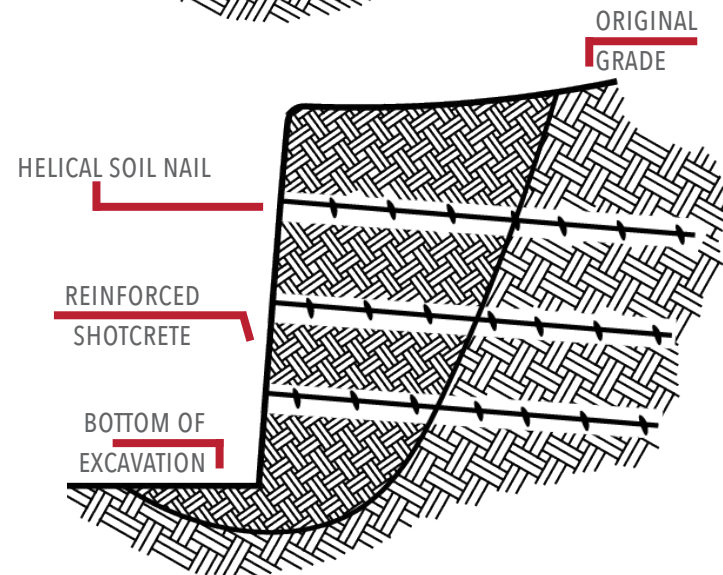
- Provide sufficient lateral support
- Produce depth and torque to assure capacity
- Economical installation
- Standard kT factors apply



SOIL NAILS

MPS Soil Nails are passive structural elements typically spaced in close geometric patterns without a structural retaining wall. Other benefits include:

- No tensioning required for installation
- Installation torque is not a critical factor
- Efficient installation
- No grout required



WE OFFER a broad range of anchors for tieback, tiedown and soil nail applications. MPS manufacturing meets ISO and ICC standards for quality to provide our customers with the best anchoring solutions. When the highest standards are required, rely on MPS helical tieback and helical soil nails for your next project.



MINIMAL SITE DISTURBANCE

Minimal site cleanup of disturbed soil - no spoils to haul away and no auguring of holes.



SAME DAY USE

Load can be applied immediately after installation - no waiting for grout to cure.



ENVIRONMENTALLY FRIENDLY

These anchors have minimal effect on the terrain, environment, and wildlife, making them a green foundation option.



REDUCE CONSTRUCTION TIME

MacLean helical anchors reduce construction time and with continuous torque monitoring assures each tieback will meet load requirement.

TIEBACK ANCHORS	SHAFT TYPE:	1.5" D6, HIGH STRENGTH 1.5" D7, 1.75" D10, D15 2"
	TENSION RATING:	55 - 150 KIPS
	TORQUE RATING:	5,500 - 15,000 FT-LBS
	HELICAL CONFIGURATION:	FROM 8"-10" DOUBLE FLIGHT TO 10"-12" - 14" - 14" - 14" FIVE FLIGHT
D6 WALL ANCHORS	9.5" LONG SINGLE HELIX LEADS:	8", 10", 12", 14"
	EXTENSIONS:	5', 7', 10'
	TORQUE RATING:	5,500 FT-LBS
D6 SOIL NAILS	7' LEADS:	Three 8" helices
	7' EXTENSION:	Three 8" helices
	TORQUE RATING:	5,500 FT-LBS
MANTA RAY ANCHORS	SURFACE AREA:	33 - 143 IN ²
	TENSION RATING:	16 - 36 KIPS



MacLean's MantaRay Anchors are a percussion installed alternative for tieback applications such as bulkheads, tiebacks and seawall. These anchors can be installed using handheld equipment for those tough to reach projects.



Scan the QR code or visit
macleancivilproducts.com
or scan code for more
product information.



Scan the QR code or visit
macleanpower.com
or scan code for more
product information.

MacLean Power Systems
481 Munn Road, Suite 300
Fort Mill, SC 29715 USA

Customer Service **1.855.MPS.SHIP**

© 2021 MacLean Power Systems
HT&SN Advertising Brochure – R07162021